



Natural Flood Management at Sissinghurst Castle

Floodplain storage at Frogmead Meadow with the National Trust

Aim

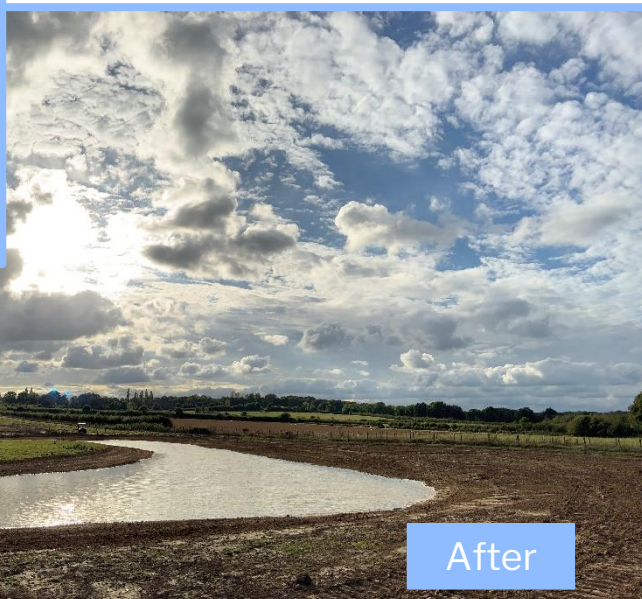
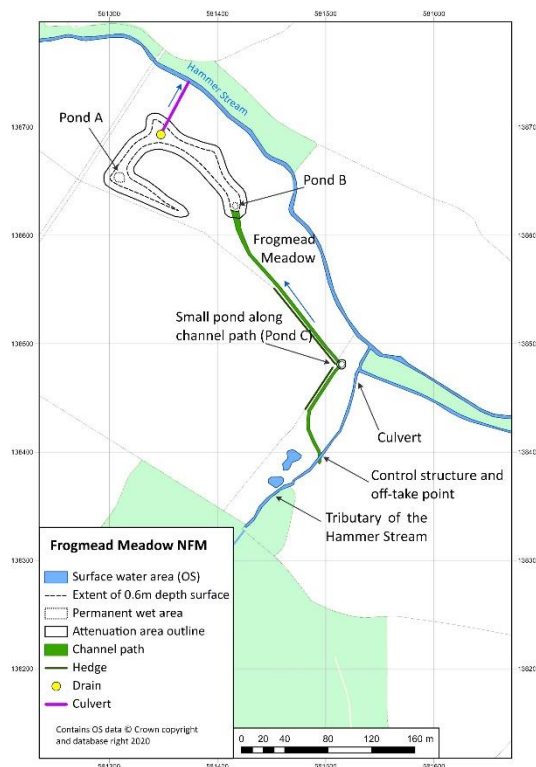
A natural flood management project to re-wet and restore a historic floodplain to provide a dynamic resource for wildlife, as well as demonstrate the technique to within the Medway catchment.

Design and Delivery

In partnership with the National Trust, SERT designed the scheme and delivered with local contractors.

A scrape (a hollowed out area of land) was dug out and an off-take channel from the stream installed to fill it in periods of high flows.

The flood meadow now temporarily stores 2600m³ of flood water, whilst also providing an area of seasonal wetland habitat.



Funders & Supporters



Multiple Benefits

Reducing Flood Risk

By creating an off-take channel (right) and control structure, high flows are now diverted into the meadow. A drain at the bottom of the scrape allows water to pass slowly back into the stream, reducing the flood peak in the Hammer Stream.



Ecological Benefits

Approximately 2.3 hectares of lowland meadow habitat were created, attracting wetland birds such as little egret, snipe and teal as well as further expanding the healthy dragonfly population.

A local wildflower seed mix was sown in the meadow. The resulting diverse mix of wildflowers supplies food to a greater diversity of pollinators, further boosting biodiversity at Sissinghurst.

Public Awareness

The restored Frogmead Meadow is on a key trail around Sissinghurst, which attracts almost 200,000 visitors per year.

With a large footfall, this NFM intervention was a great opportunity to raise the awareness of NFM with the general public. An information board was designed and installed to explain the project and the benefits it brings.

